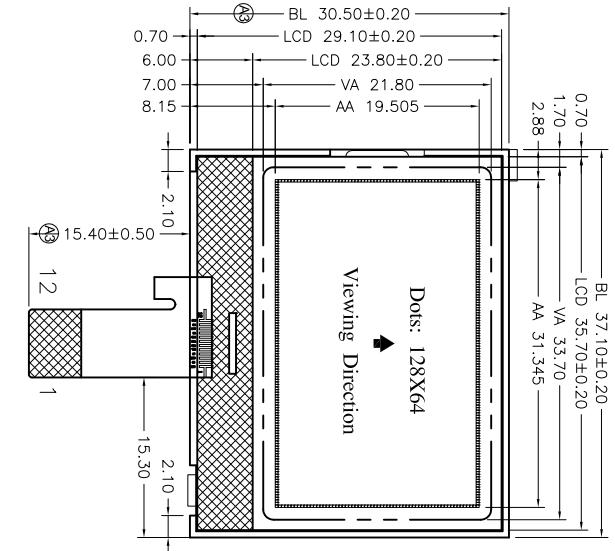


Signature:

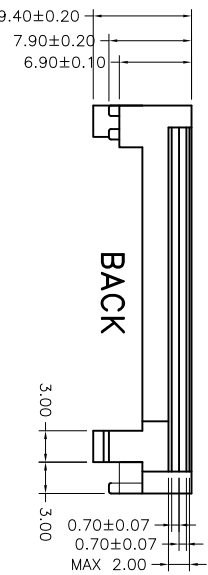
Date:



FRONT

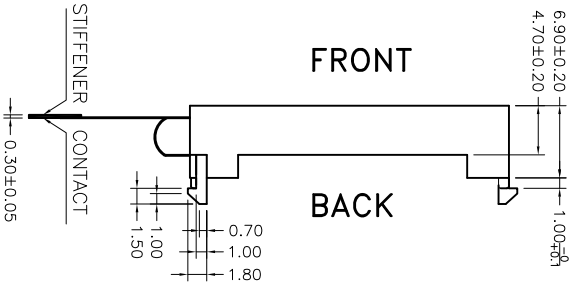


FRONT



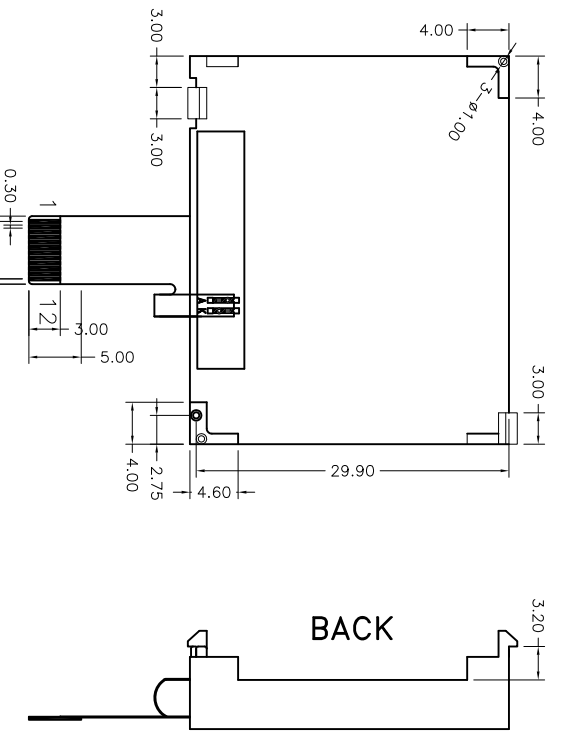
BACK

REV.	DESCRIPTION	REVISER	DATE
A0	First Issue	Luojinwei	2014.11.13
A1	修改结构, 整体长度改为37.1mm	Luojinwei	2014.11.27
A2	改背光结构	Luojinwei	2014.12.03
A3	改背光结构	Luojinwei	2015.06.29



FRONT

BACK



BACK

FRONT

DOTS SIDE
SCALE 20:1

COM & SEG LAYOUT

BACKLIGHT CIRCUIT
2PCS WHITE LED
IF=30mA & VF=3.0V

PIN	SYMBOL
1	/CS
2	/RES
3	A0
4	SCLK
5	SDA
6	VDD
7	VSS
8	V0
9	XV0
10	VG
11	A
12	K

LUMMAX ELECTRONICS CO.,LTD

Unspecified Tolerance:	±0.20	UNITS: mm	DATE:	MODEL NUMBER:	PROJECTION	SHEET:
DESIGN BY:	Luojinwei	2015.06.29	HFG12864-157-NTDSW-R-A3			1 OF 1
CHECKED BY:						DATE: 2015.06.29

- Specifications:
1. Display Mode: FFSTN/Transmissive/Negative.
 2. Viewing Angle: 6 0'clock.
 3. Drive Method: 1/64 Duty 1/9 Bias, Vop= 9.0V, Vdd= 3.0V.
 4. Top: 0°C~+50°C, Tst: -10°C~+60°C.
 5. Connector: COG+FPC.
 6. Drive IC: ST7567
 7. RoHS Compliant: Yes.
 8. With " * " Mark Dimensions Are Important Dimensions.