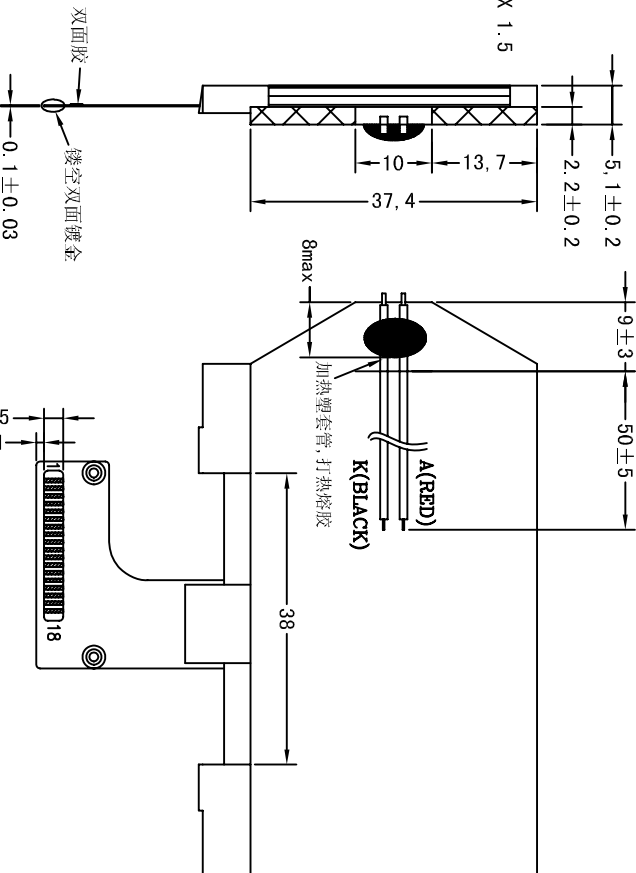
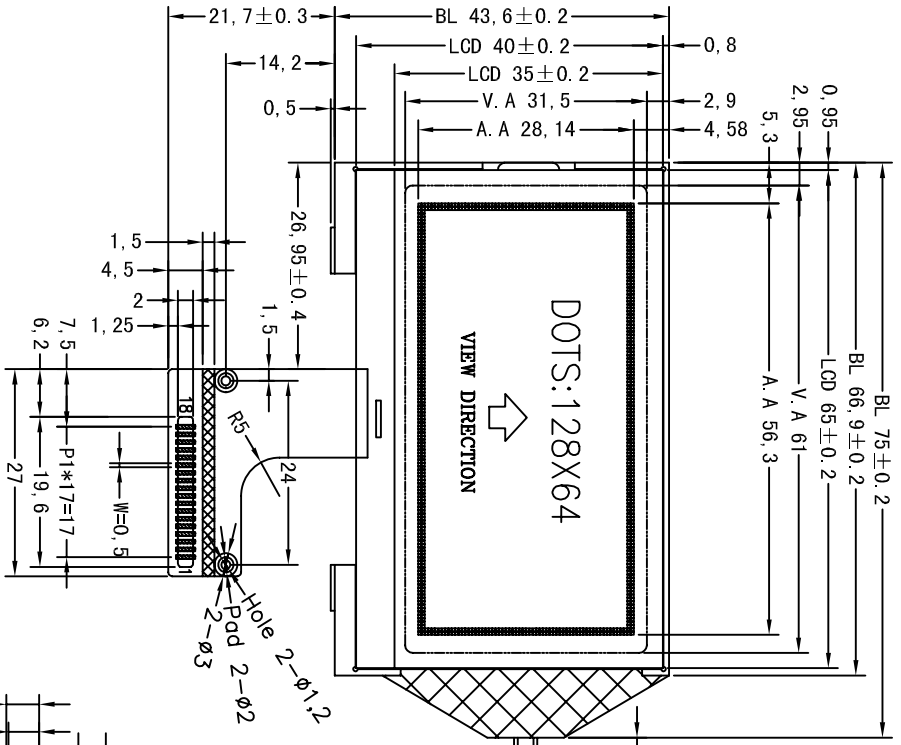
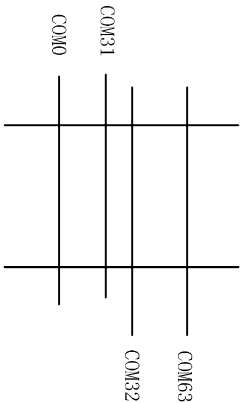
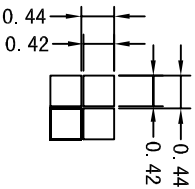
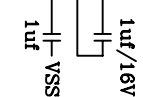


SYM	REV	DESCRIPTION	DATE
01	First issue		Sep-26-2014



PIN	SYMBOL
1	NC
2	CS
3	RES
4	A0
5	SCK
6	SDA
7	VDD
8	VDD
9	GND
10	NC
11	NC
12	NC
13	NC
14	NC
15	V0
16	XV0
17	VG
18	NC



LCD LAYOUT

- NOTES:
1. DISPLAY TYPE: STN/Y-G/POSITIVE
 2. OPERATING VOLTAGE: VDD=3, Vlcd=10V
 3. DRIVE MODE: 1/65D,1/9B
 4. VIEWING DIRECTION: 6:00
 5. POLARIZER TYPE: TRANSMISSIVE
 6. OPERATING TEMPERATURE: -10°C~60°C
 7. STORAGE TEMPERATURE: -20°C~70°C
 8. CONNECTOR: COG/ST756V
 9. BACKLIGHT: Green LED, 3V, 15mA

TITLE:	CD		LUMMAX ELECTRONICS CO., LIMITED
Draw:	XQC	MODEL:	HEM12864-227D
CHK:		UNIT:	mm
Appv:		SCALE:	
		GENERAL TOL:	±0.2
		DWG NO:	C-01
		SHEET NO:	1/1